



CAPITAL PROJECTS LEVY

Election Day - February 13, 2018

What is the District's long range plan?

Why Stevens Middle School now and not Port Angeles High School?

New state mandates that weren't in existence at the time of the 2015 bond calling for **lowering class sizes** need to be addressed. By moving 6th grade back to Stevens Middle School, it **creates space at every elementary school**.

Why is our District asking for funding?

Our facilities are well cared for, but are aging, some older than 60 years. Port Angeles High School (7 buildings built in the 1950's), Franklin Elementary (1954), Hamilton Elementary (1956) and Stevens Middle School (1960) are four critical buildings needing to be brought up to standards.

A \$98 million bond measure in 2015 to fund a new high school did not pass.

- We listened to voters when they said: (1) \$98 million was too much to ask for all at once,
- (2) \$181,724,031 million, interest included, was too much to pay over a 25-year period, and
- (3) what is the long range plan beyond just the high school?

Why a Capital Projects Levy?

A Capital Projects Levy is a short-term, interest-free, voter-approved measure that provides funding for modernization and/or replacement of school buildings.

A Capital Projects Levy would help the District to begin to address some facilities projects in smaller steps.

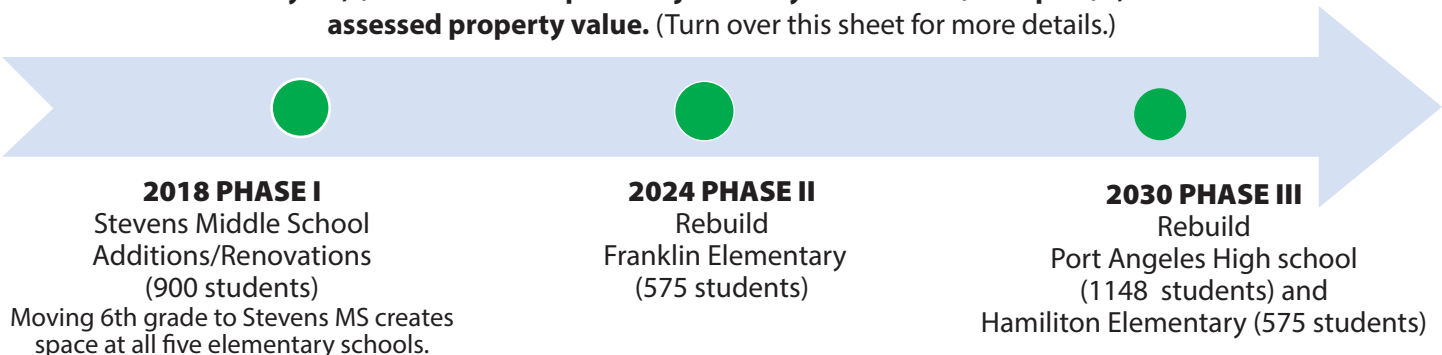
A Capital Projects Levy has **no interest payments**.

What is needed?

Safety/Security Upgrades, Space/Additional Classrooms, Infrastructure Updates, Energy Efficiency

How much will it cost?

A 6-year, \$46.7 million Capital Projects Levy would cost \$2.47 per \$1,000 of assessed property value. (Turn over this sheet for more details.)



In Washington State, McCleary seeks to fund the cost of basic education, but does not address the cost of building new schools, renovating old schools, large maintenance projects or technology needs.

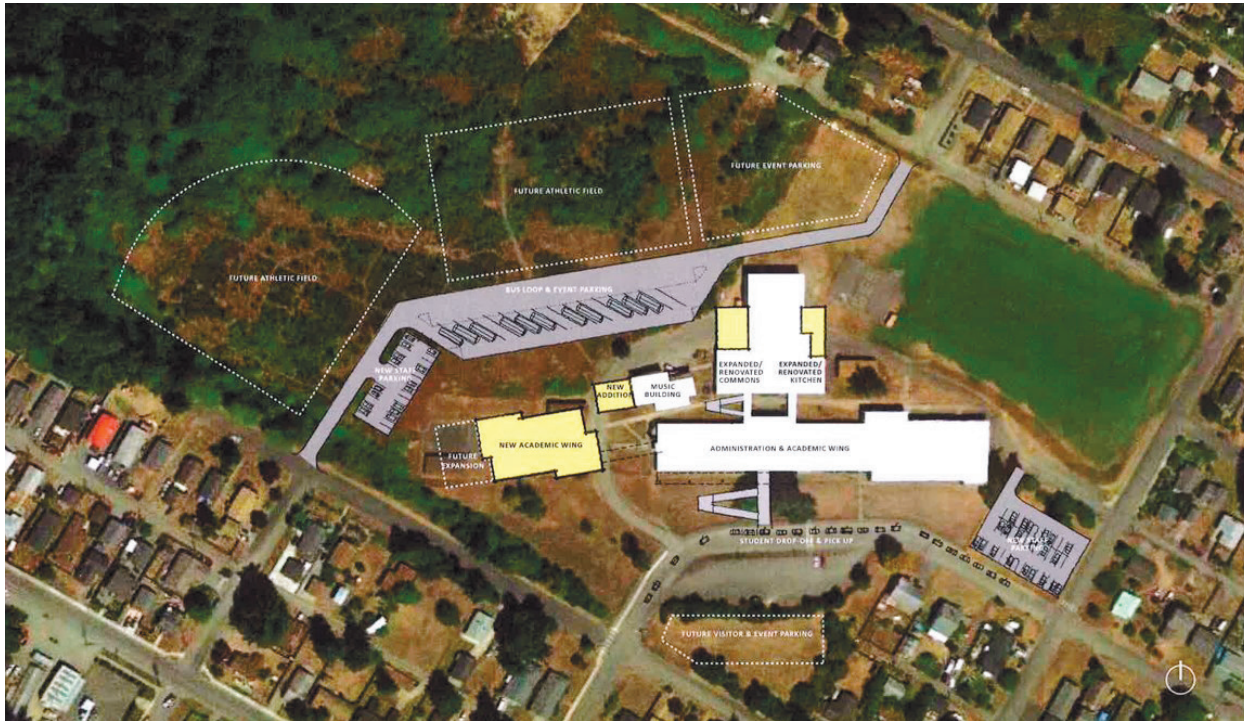
Who is exempt? Persons at least 62 years of age or persons under 62 years of age and retired from regular gainful employment due to a disability who earn less than \$40,000 annually may qualify for the Senior Exemption or Disability Exemption. Please contact the Clallam County Assessor's Office at 360-417-2400 for further information.

Questions? Consult our website at www.portangelesschools.org or call us at 360-457-8575.



PHASE I: STEVENS MIDDLE SCHOOL

1139 West 14th Street, PA
(currently grades 7 & 8, enrollment 557)



NEW ADDITION (in yellow):

- ★ 14 classroom expansion
- ★ New Orchestra room
- ★ New Access Lane for Bus Drop-off
- ★ New Career Technical Education (CTE) classroom
- ★ Increase space for Cafeteria, P.E.
- ★ Additional Bathrooms
- ★ ADA Compliant

EXISTING STRUCTURE (in white):

- ★ All Existing Classrooms, Hallways, Office Space Updated
- ★ New Electrical, Plumbing, Insulation, HVAC Systems
- ★ Capacity for 900 Students after Modernization (grades 6, 7 & 8)

What is available in State Assistance?

The cost of this phase is \$46.7 million (or **\$2.47 per \$1,000 of assessed property value**) of local levy collection (in green) for additional space and safety upgrades for Stevens Middle School.

State Assistance (in blue) of up to \$14 million will allow for complete modernization of the current Stevens Middle School structure and would take care of this school for the next thirty years.

